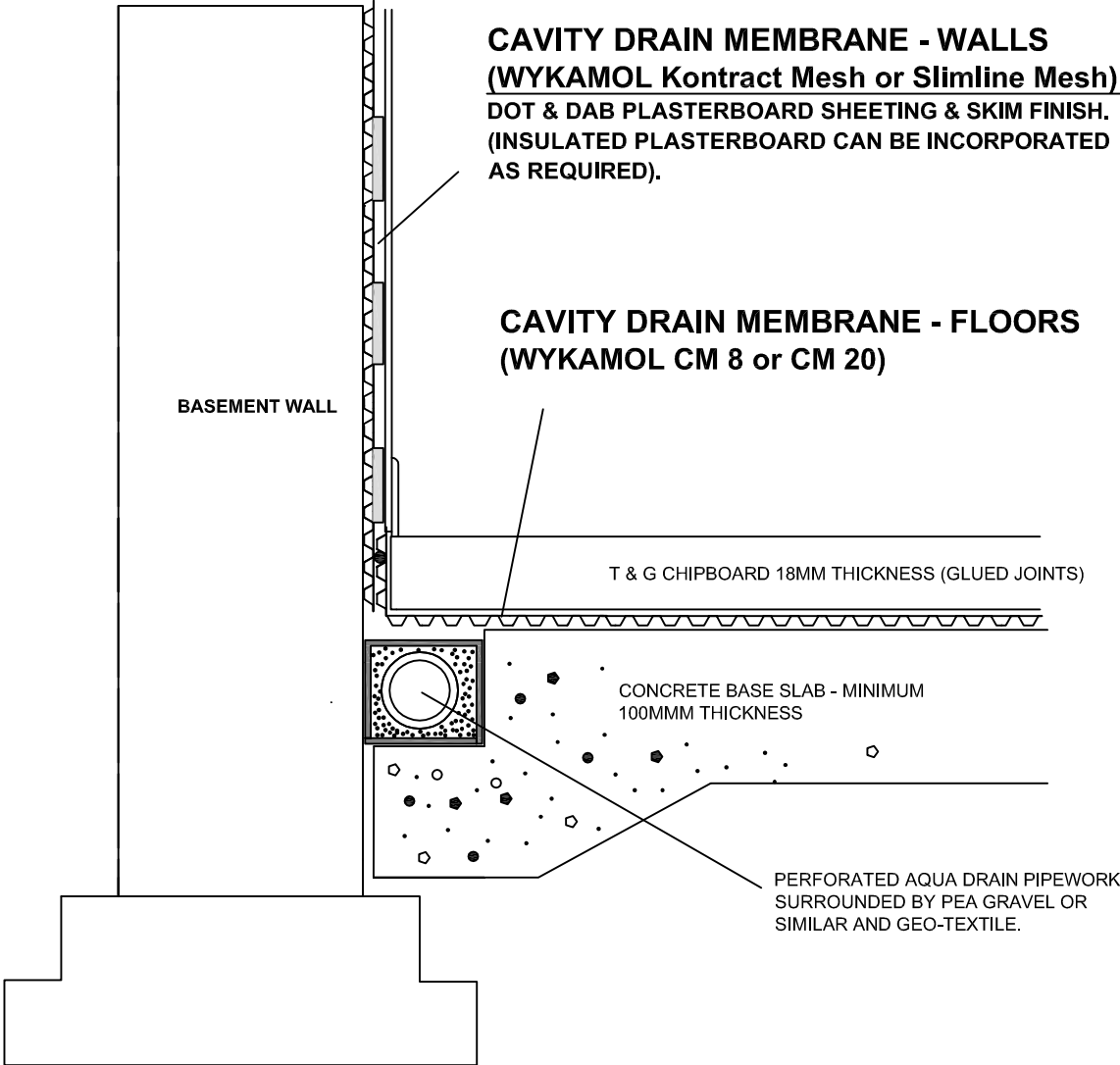


SECTION DETAIL - DOT & DAB DRYLINING & CHIPBOARD FLOOR



CAVITY DRAIN MEMBRANE - WALLS
(WYKAMOL Kontract Mesh or Slimline Mesh)
DOT & DAB PLASTERBOARD SHEETING & SKIM FINISH.
(INSULATED PLASTERBOARD CAN BE INCORPORATED AS REQUIRED).

CAVITY DRAIN MEMBRANE - FLOORS
(WYKAMOL CM 8 or CM 20)

BASEMENT WALL

T & G CHIPBOARD 18MM THICKNESS (GLUED JOINTS)

CONCRETE BASE SLAB - MINIMUM 100MM THICKNESS

PERFORATED AQUA DRAIN PIPEWORK SURROUNDED BY PEA GRAVEL OR SIMILAR AND GEO-TEXTILE.