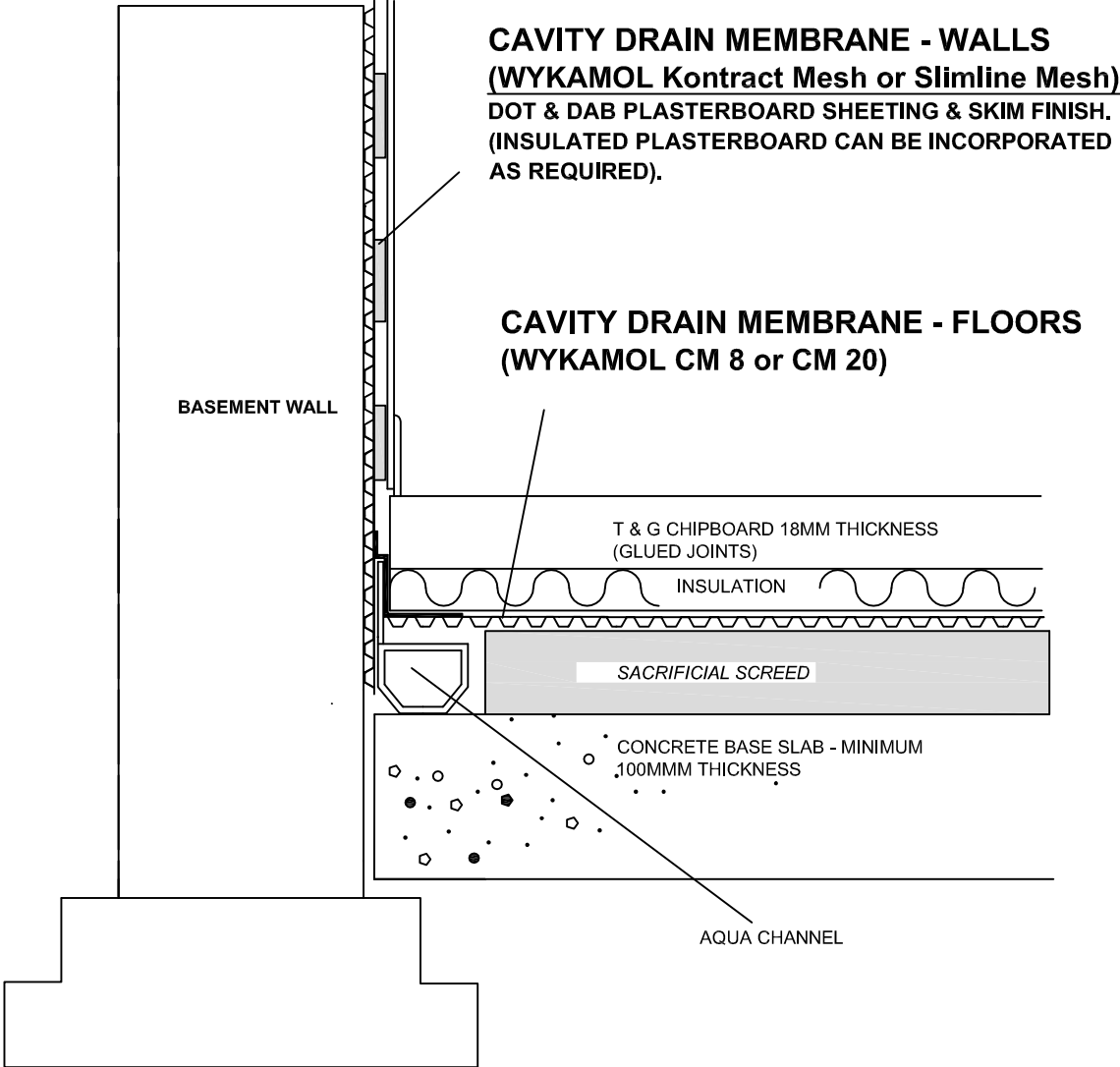


SECTION DETAIL - DOT & DAB DRYLINING & INSULATED CHIPBOARD FLOOR



CAVITY DRAIN MEMBRANE - WALLS
(WYKAMOL Kontract Mesh or Slimline Mesh)
DOT & DAB PLASTERBOARD SHEETING & SKIM FINISH.
(INSULATED PLASTERBOARD CAN BE INCORPORATED AS REQUIRED).

CAVITY DRAIN MEMBRANE - FLOORS
(WYKAMOL CM 8 or CM 20)

BASEMENT WALL

T & G CHIPBOARD 18MM THICKNESS
(GLUED JOINTS)

INSULATION

SACRIFICIAL SCREED

CONCRETE BASE SLAB - MINIMUM
100MM THICKNESS

AQUA CHANNEL