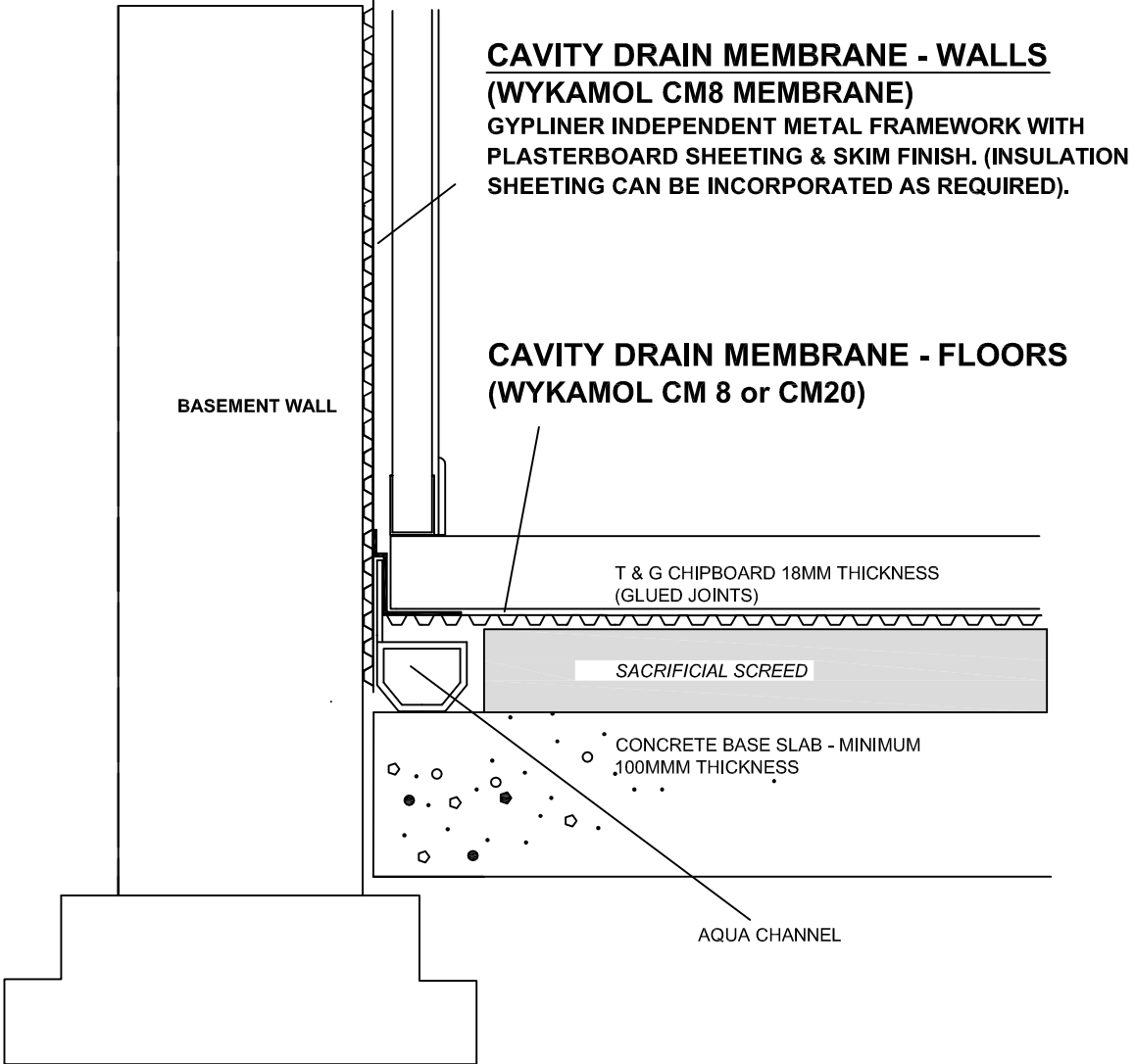


SECTION DETAIL - METAL FRAME DRYLINING & CHIPBOARD FLOOR



**CAVITY DRAIN MEMBRANE - WALLS
(WYKAMOL CM8 MEMBRANE)**
GYPLINER INDEPENDENT METAL FRAMEWORK WITH
PLASTERBOARD SHEETING & SKIM FINISH. (INSULATION
SHEETING CAN BE INCORPORATED AS REQUIRED).

**CAVITY DRAIN MEMBRANE - FLOORS
(WYKAMOL CM 8 or CM20)**

BASEMENT WALL

T & G CHIPBOARD 18MM THICKNESS
(GLUED JOINTS)

SACRIFICIAL SCREED

CONCRETE BASE SLAB - MINIMUM
100MM THICKNESS

AQUA CHANNEL