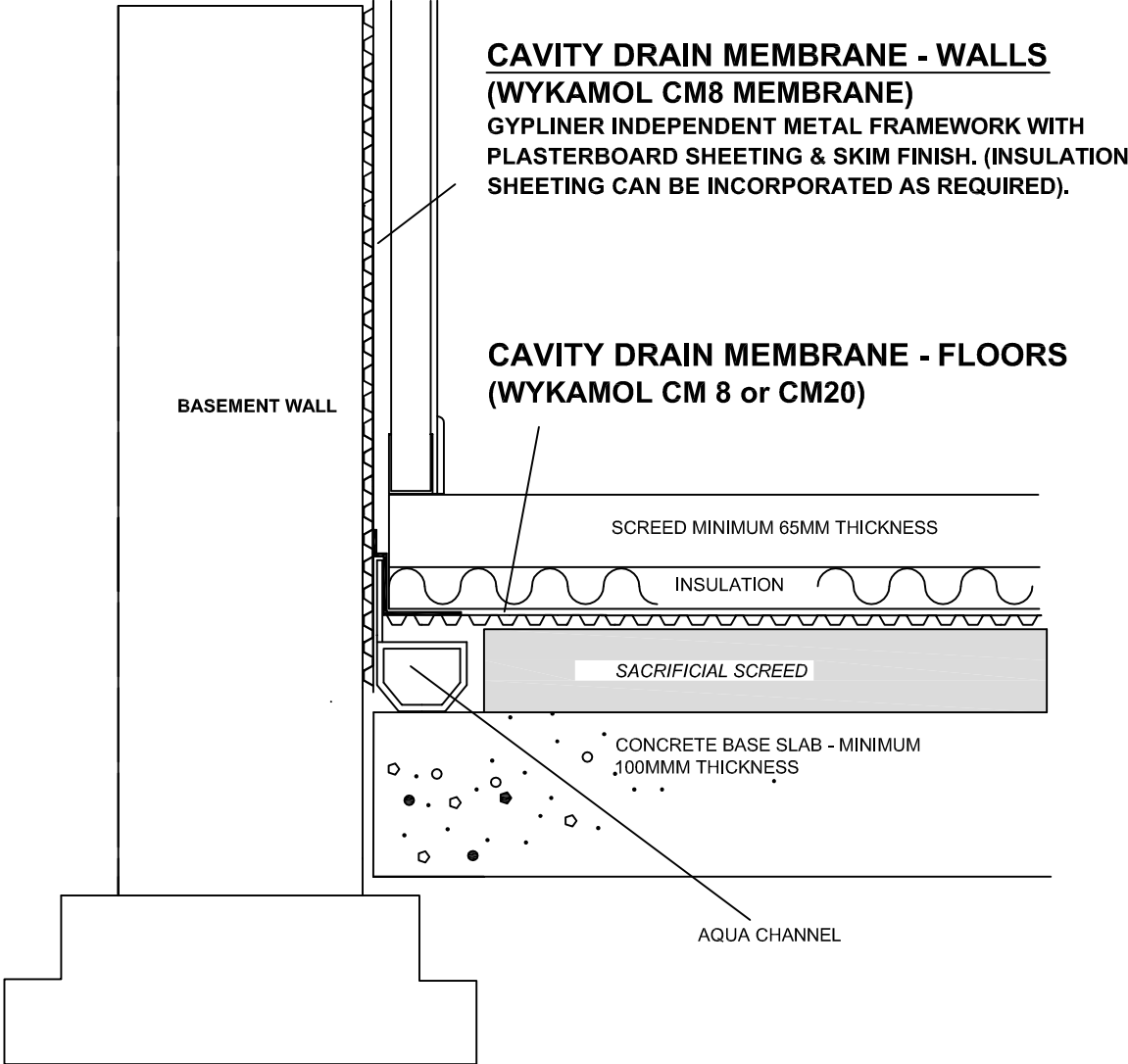


# SECTION DETAIL - METAL FRAMEWORK DRYLINING & INSULATED FLOOR SCREED



**CAVITY DRAIN MEMBRANE - WALLS**  
**(WYKAMOL CM8 MEMBRANE)**  
GYPLINER INDEPENDENT METAL FRAMEWORK WITH  
PLASTERBOARD SHEETING & SKIM FINISH. (INSULATION  
SHEETING CAN BE INCORPORATED AS REQUIRED).

**CAVITY DRAIN MEMBRANE - FLOORS**  
**(WYKAMOL CM 8 or CM20)**

BASEMENT WALL

SCREED MINIMUM 65MM THICKNESS

INSULATION

SACRIFICIAL SCREED

CONCRETE BASE SLAB - MINIMUM  
100MM THICKNESS

AQUA CHANNEL