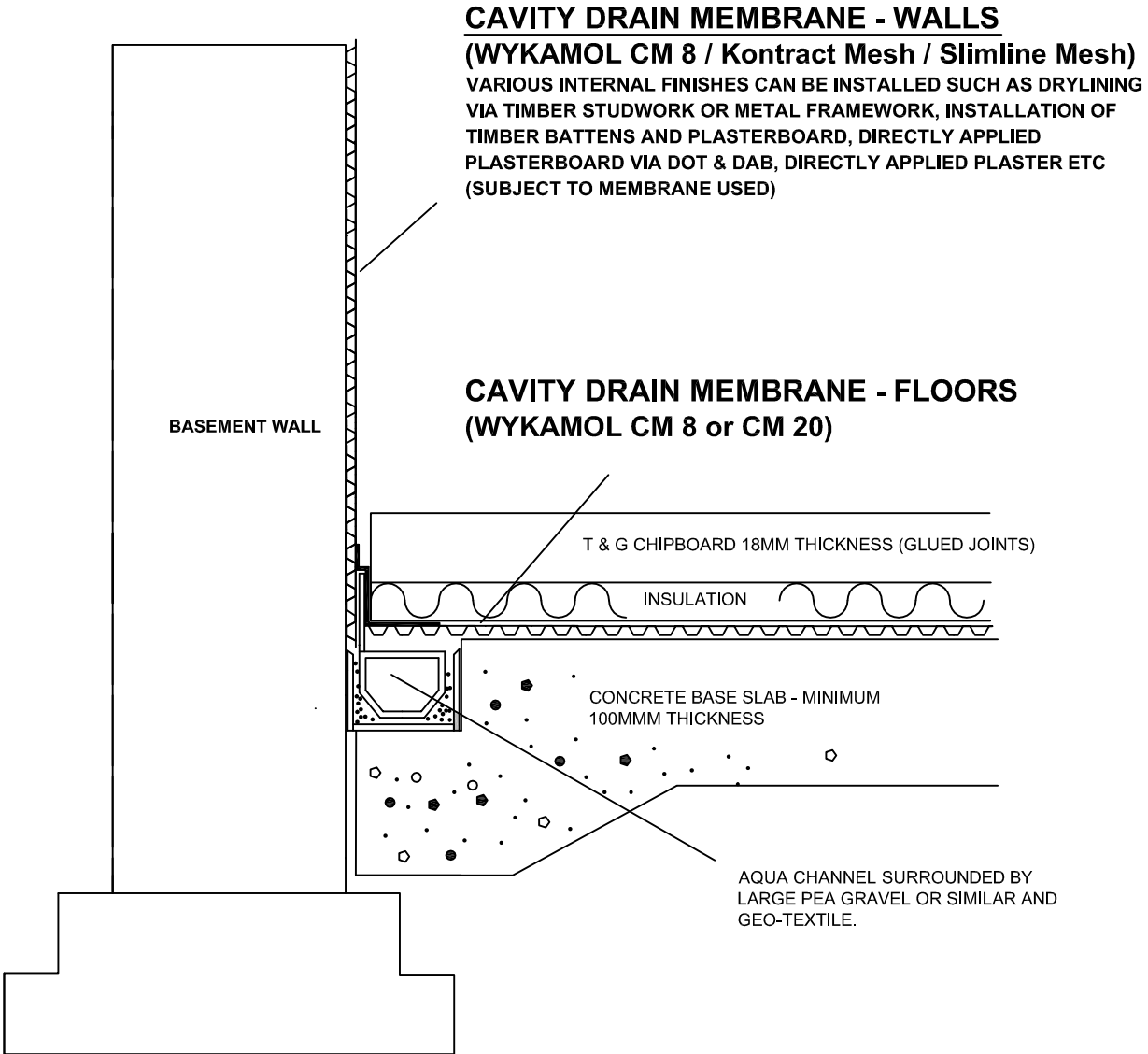


SECTION DETAIL - INSULATED CHIPBOARD FLOOR



CAVITY DRAIN MEMBRANE - WALLS

(WYKAMOL CM 8 / Kontract Mesh / Slimline Mesh)
VARIOUS INTERNAL FINISHES CAN BE INSTALLED SUCH AS DRYLINING VIA TIMBER STUDWORK OR METAL FRAMEWORK, INSTALLATION OF TIMBER BATTENS AND PLASTERBOARD, DIRECTLY APPLIED PLASTERBOARD VIA DOT & DAB, DIRECTLY APPLIED PLASTER ETC (SUBJECT TO MEMBRANE USED)

CAVITY DRAIN MEMBRANE - FLOORS

(WYKAMOL CM 8 or CM 20)

BASEMENT WALL

T & G CHIPBOARD 18MM THICKNESS (GLUED JOINTS)

INSULATION

CONCRETE BASE SLAB - MINIMUM 100MM THICKNESS

AQUA CHANNEL SURROUNDED BY LARGE PEA GRAVEL OR SIMILAR AND GEO-TEXTILE.