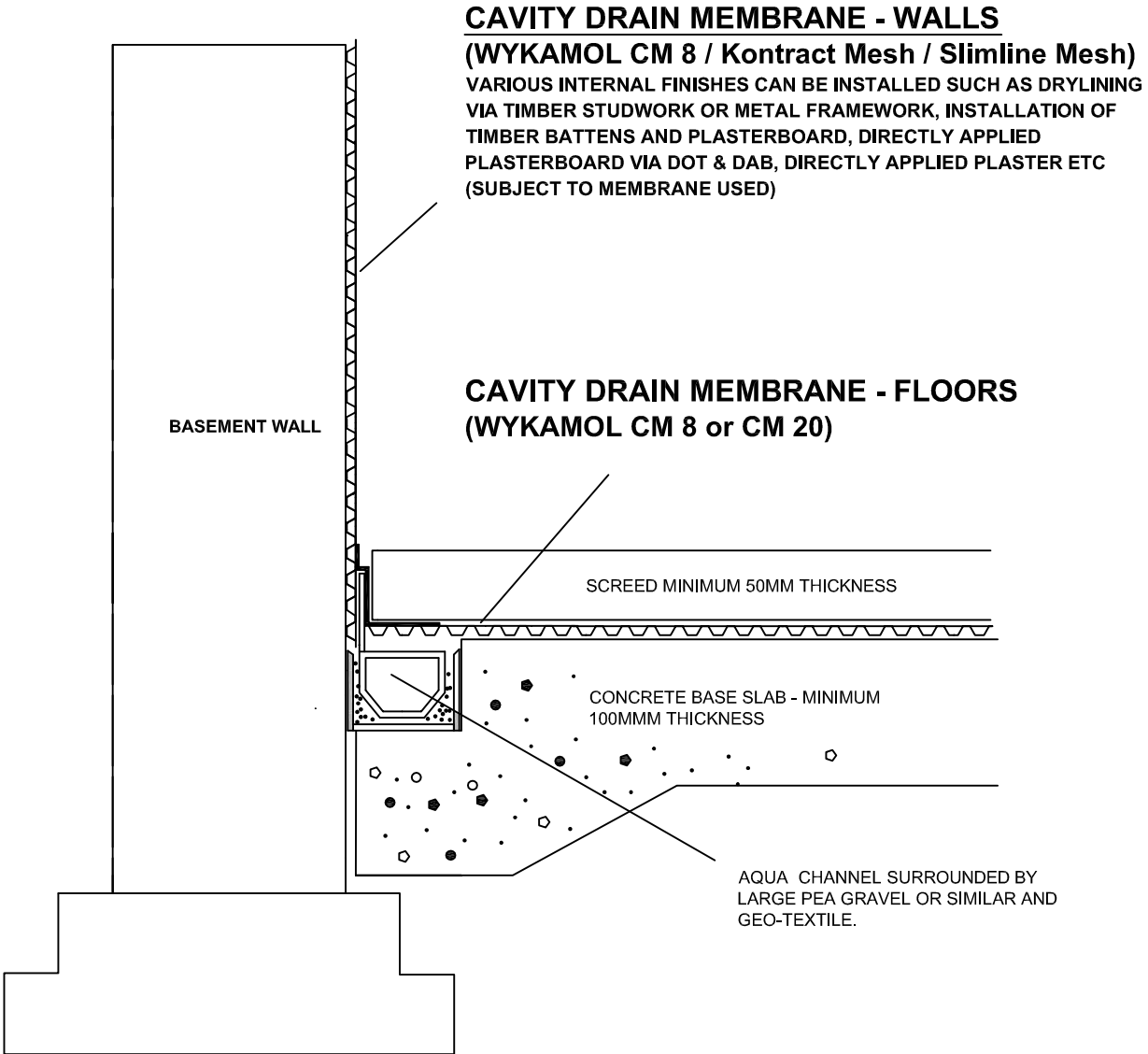


SECTION DETAIL - FLOOR SCREED



CAVITY DRAIN MEMBRANE - WALLS

(WYKAMOL CM 8 / Kontract Mesh / Slimline Mesh)
VARIOUS INTERNAL FINISHES CAN BE INSTALLED SUCH AS DRYLINING
VIA TIMBER STUDWORK OR METAL FRAMEWORK, INSTALLATION OF
TIMBER BATTENS AND PLASTERBOARD, DIRECTLY APPLIED
PLASTERBOARD VIA DOT & DAB, DIRECTLY APPLIED PLASTER ETC
(SUBJECT TO MEMBRANE USED)

CAVITY DRAIN MEMBRANE - FLOORS

(WYKAMOL CM 8 or CM 20)

BASEMENT WALL

SCREED MINIMUM 50MM THICKNESS

CONCRETE BASE SLAB - MINIMUM
100MM THICKNESS

AQUA CHANNEL SURROUNDED BY
LARGE PEA GRAVEL OR SIMILAR AND
GEO-TEXTILE.