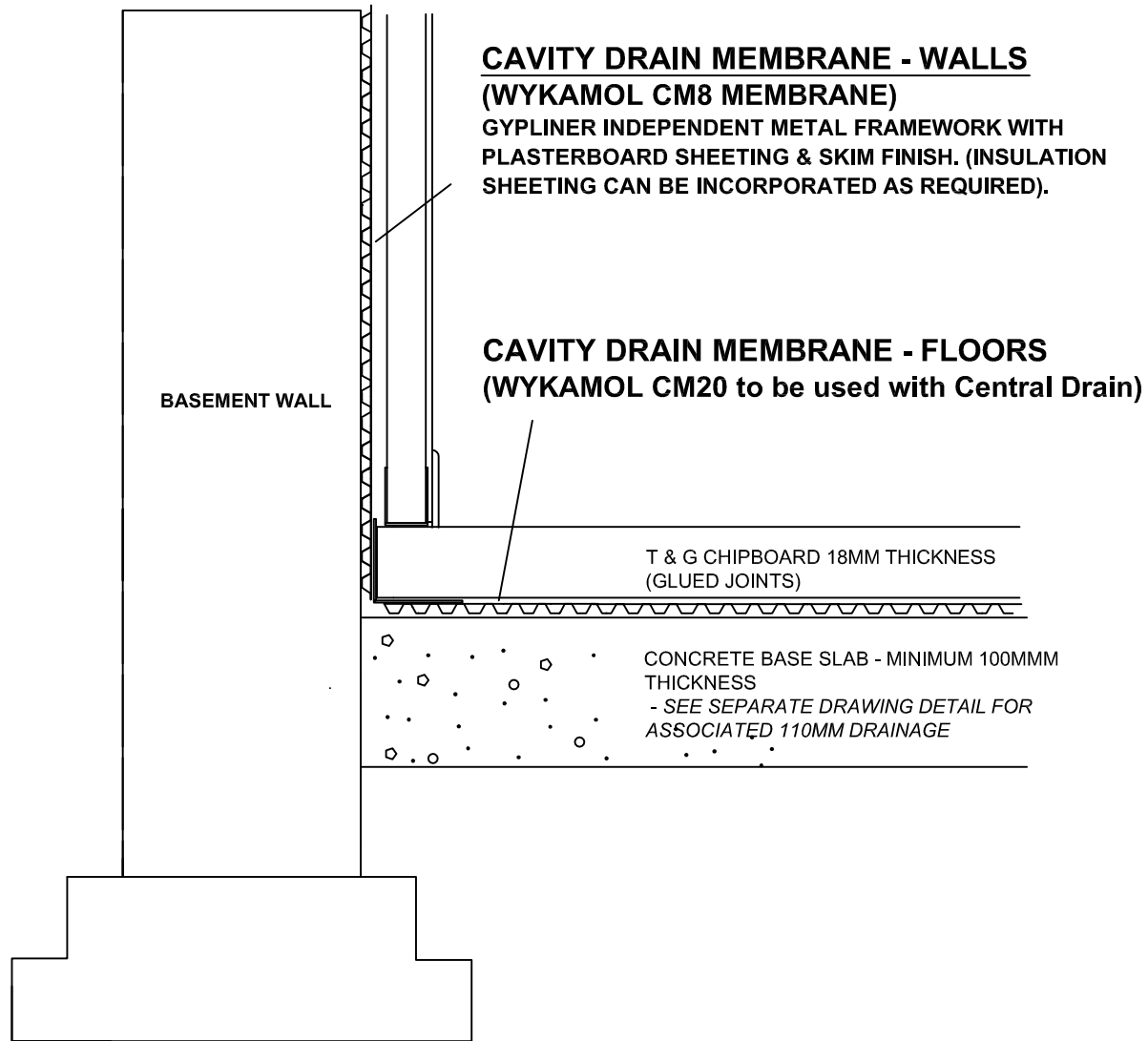


SECTION DETAIL - METAL FRAMEWORK DRYLINING & CHIPBOARD FLOOR



**CAVITY DRAIN MEMBRANE - WALLS
(WYKAMOL CM8 MEMBRANE)**
GYPLINER INDEPENDENT METAL FRAMEWORK WITH
PLASTERBOARD SHEETING & SKIM FINISH. (INSULATION
SHEETING CAN BE INCORPORATED AS REQUIRED).

**CAVITY DRAIN MEMBRANE - FLOORS
(WYKAMOL CM20 to be used with Central Drain)**

T & G CHIPBOARD 18MM THICKNESS
(GLUED JOINTS)

CONCRETE BASE SLAB - MINIMUM 100MMM
THICKNESS
- SEE SEPARATE DRAWING DETAIL FOR
ASSOCIATED 110MM DRAINAGE

FOR DRAINAGE DETAIL REFER
TO DRAWING 005 -
CENTRAL DRAINAGE TO SUMP