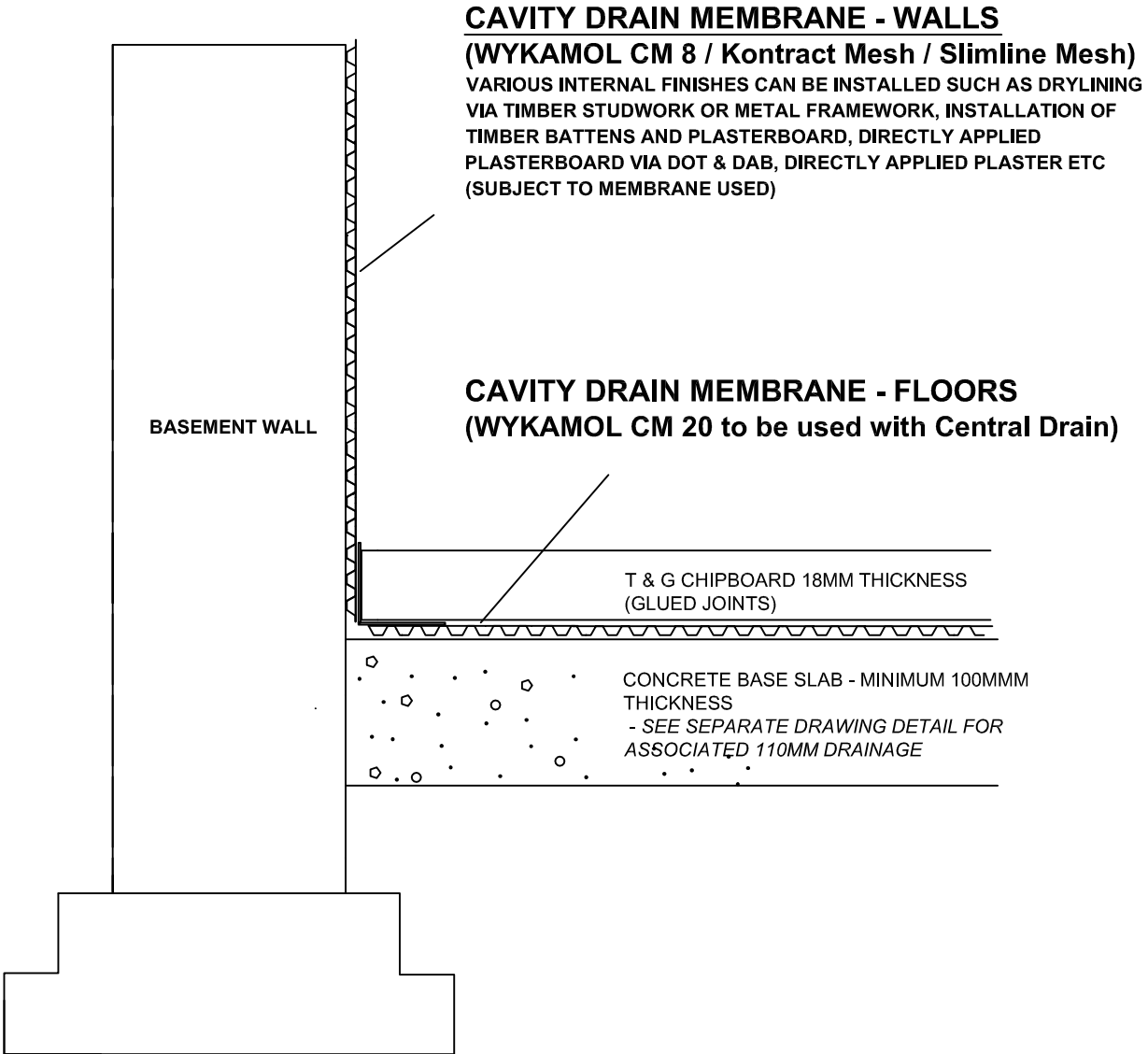


SECTION DETAIL - CHIPBOARD FLOOR



CAVITY DRAIN MEMBRANE - WALLS

(WYKAMOL CM 8 / Kontract Mesh / Slimline Mesh)
VARIOUS INTERNAL FINISHES CAN BE INSTALLED SUCH AS DRYLINING VIA TIMBER STUDWORK OR METAL FRAMEWORK, INSTALLATION OF TIMBER BATTENS AND PLASTERBOARD, DIRECTLY APPLIED PLASTERBOARD VIA DOT & DAB, DIRECTLY APPLIED PLASTER ETC (SUBJECT TO MEMBRANE USED)

FOR DRAINAGE DETAIL REFER TO DRAWING 005 - CENTRAL DRAINAGE TO SUMP

CAVITY DRAIN MEMBRANE - FLOORS

(WYKAMOL CM 20 to be used with Central Drain)

T & G CHIPBOARD 18MM THICKNESS (GLUED JOINTS)

CONCRETE BASE SLAB - MINIMUM 100MMM THICKNESS
- SEE SEPARATE DRAWING DETAIL FOR ASSOCIATED 110MM DRAINAGE