

STTCP/STTCP Way Kambas.

By:

Sumianto

Members: Nur Alim, Ali Mashuri, Sunarwanto, Maryo

Counterpart: Apriawan, Rustanto.

A. Background

Condition of Sumatran tiger population as one of Sumatran endemic animal, umbrella animal of forest ecosystem decrease. Pursuant to newest estimation adopted in document of Conservation Strategy and Action Plan of Sumatran Tiger of year 2007 – 2017 by forestry ministry 2007 mentioned that tiger population in the wild less than 300 individual.

Way Kambas National Park is one of important conservation area of tiger in Sumatra. With broadly about 130.000 ha, WKNP can be smallest national park in Sumatra with high density of Sumatran tiger is about 4,3 ekor/100 km² (Franklin et.all. 1999).

STTCP continue to support and assist Way Kambas National Park in the effort conservation of Sumatran tiger of through with work programm and the activity which have been agreed on being based on three especial component that is: monitoring, protection, and also improvement of conservation awareness of socialize.

B. Monitoring of the Tiger, Animal Prey and Habitat.

B.1 Result of Monitoring by Camera Traps

Result of monitoring use camera trap Up to year-end 2008, STTCP operate 5 unit of camera trap. From installation 5 units of camera during period of year 2008 obtained photo and video of wild Sumatra tiger and also various type of other wild animal, that is some type of animal prey like barking deer (*Muntiacus muntjac*), sambar deer (*Cervus unicolor*), forest pig (*Sus scrofa*) and the type monkey of long tail macaque (*Macaca fascicularis*) and pig tile macaque (*Macaca nemestrina*). Also some type of big mammal that is Sumatran elephant (*Elephas maximus sumatrensis*), tapir (*Tapirus indicus*) and the sun bear (*Helarctos malayanus*) and Sumatran rhino (*Dicerorhinus sumatrensis*).

a. Sumatra Tiger

Result of monitoring [of] through camera trap [in] region TNWK [of] during year period 2008 at least there are 6 individual of Sumatran tigers which monitored inclusive of 2 individual among other things represent tiger cub with age estimated less than 1 year. While among most tiger individual often photographed of during the period is Gogon.

Tabel 1. Individual of tiger monitored until end of year 2008

No	Tiger's Id	Age/Sex
1	Gogon	Adult/male
2	Mayang	Adult/female
3	Christina	Adult/female
4	Richrad	Adult/male
5	NN	Cub/male
6	NN	Cub/female



Figure 1. Some photo of tiger in WKNP

b. Animal prey

Type of animal prey monitoring from result camera trap during year 2008 shall be as follows :

Tabel 2. List of kind prey animal captured by camera trap in WKNP

No	Indonesian name	Scientific name
1	Kijang	<i>Muntiacus muntjac</i>
2	Sambar	<i>Carvus unicolor</i>
3	Monyet ekor panjang	<i>Macaca fascicularis</i>
4	Beruk	<i>Macaca nemestrina</i>
5	Babi Hutan	<i>Sus scrova</i>

Figure 2. Percentage of prey result camera traps in WKNP

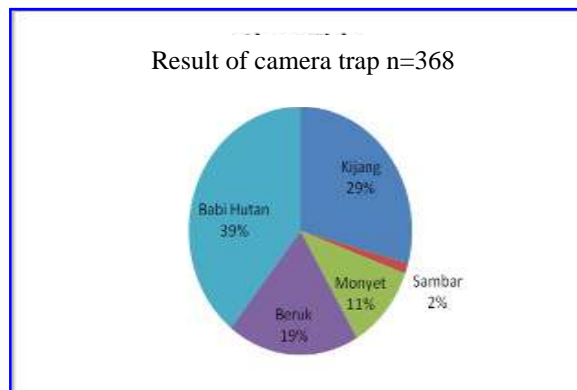




Figure 3. Some prey animal in WKNP

c. Big mammal.

From result of camera trap to various type of big animal indicate that camera trap effective for monitoring wild animal also knowed have been happened overlap habitat between tiger with other big animal. This condition is very possible happened to remember in WKNP own 5 type of big animal. Following list of big animal which monitored by camera trap during this period :

Tabel 3. List of big mammals in WKNP

No	Indonesia name	Scientific name
1	Gajah sumatera	<i>Elephas maximus sumatrensis</i>
2	Tapir	<i>Tapirus indicus</i>
3	Beruang madu	<i>Herlakctos malayanus</i>
4	Badak sumatera	<i>Dicerorhinus sumatrensis</i>

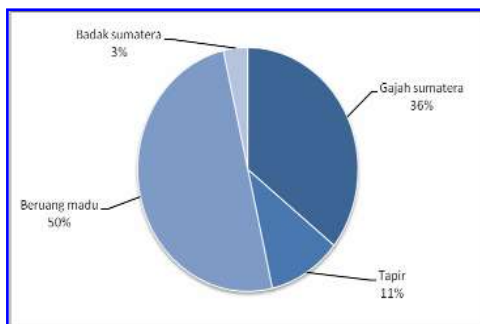


Figure 4. Big mammals in WKNP result of camera traps



B.2 Monitoring of Movement of Tiger And Animal Prey

Beside use camera trap, monitoring activity through survey by walk to ascertain animal and Sumatran tiger movement and existence prey pursuant to marking secondary continue to be done by team STTCP. Base on survey activity result during year 2008 hereinafter conducted compilation, analysis and integrated in mapping system so that we know distribution tiger and movement pattern, animal prey and the other mammals in WKNP.

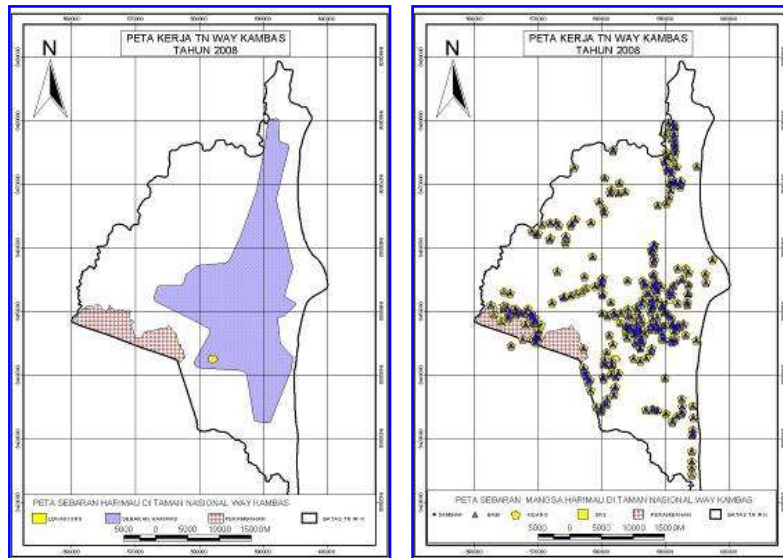


Figure 5. map of distribution of wildlife in WKNP

- Distribution of tiger
- Distribution of prey animals

B.3 Habitat Monitoring and Construction

In line with long term monitoring to Sumatran tiger, activity of monitoring to tiger and prey habitat also continue. Activity of habitat monitoring conducted in location which is high density of tiger or prey there.

C. Habitat Protection.

Patrol is as an activity or action which is conducted for prevent or execution to perpetrator illegal activity. Patrol conducted routinely and suddenly (pursuant need or information from undercover team). Routine patrol, executed 3 times per month and generally in activity in forest about 5 days per trip. For a while the suddenly patrol generally conducted after information existence requiring action immediately. This suddenly patrol usually conducted joint with national park ranger or other NGO like RPU (Rhino Protection Unit). Patrol conduct to represent patrol by foot, and for the special case – certain case or if there is very urgent information also use motorbike.

C.1 Routine Patrol and the Joint patrol

- Routine patrol and the sweeping of entrap.

Routine patrol conducted by STTCP team especially to guarantee security of research location (TIMA) as well as to conduct seeking and crushing of traps in and also alongside frontier WKNP. Modus of installation traps is generally install in active animal trail with equipments of string interlude.

In activity of routine patrol besides STTCP team also entangle staff of park from every section or resort becoming patrol location. From operation of seeking and destroy of the traps thereby grand total of a success trap broken by STTCP team during period year 2008 as much 200 fruit entrap. Team of STTCP will be continue to operate sweeping and destruction of the traps cause is possibility of some traps which have in tide by hunter not yet finding altogether. Beside threat from hunter of tiger and animal prey there are also the very dangerous threat that is forest fire. From data which is collecting prediction that fire is generally conducted by hunter as well as all bird thief. They burning location like along-alang grass land and after a week the deer usually come to feeding the young leaf of grass. The other, hunter burning some location and when the team busy to handle forest fire, the hunter will come to the park from other side.



Figure 6. Staff of PKHS/STTCP patrol by walk and use motorbike

- *Joint patrol.*

Joint patrol activity in area WKNP conducted minimize 1 times each month among STTCP team with RPU team. Joint patrol is especially intended by as anticipatory form or prevent activity to illegal activity like hunt using fire arm requiring larger ones preparation and personnel. Beside that with joint activity like that expected will become good form collaboration and coordination system in the field among partner in WKNP.

- *Arrest of illegal Perpetrator*

As action form continue (follow up) gathering information from undercover activity conducted by RPU and STTCP, hence conducted by a action punish that is arrest and attack to illegal

perpetrator is ownership of body protected animal (tiger husk and ivory). This activity represent is collaboration among Conservation Nature Resources (BKSDA) Tanjung Karang II, WKNP, RPU and STTCP. By good co-ordinate system and good preparation, arrest and attack activity succeed to catch perpetrator. After arrest process complete, case handling hereinafter conducted by BKSDA and police /POLDA. Identity of perpetrator:

- Name : Wartono (WR)
- Age : 45 years old
- Job title : head of Village in Gaya Baru sub district, central of Lampung Regency



Figure 8. Suspect owner part of body protected animal punish for 1 year in jail.

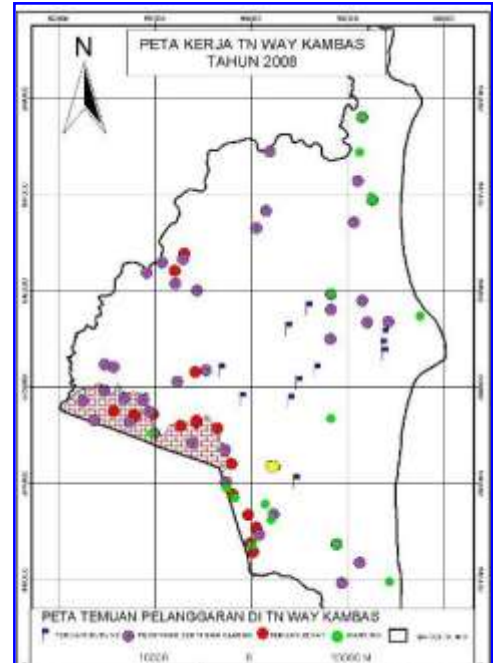


Figure 7. Distribution of threats in WKNP

D. Public Awareness and Training.

Awareness activity as part of tiger conservation and saving effort intended to give knowledge and information about importance conservation of Sumatran tiger, linking or communicated and assuaging conflict about public need and conservation need, and also expectation active participation and support creation from society to conservation effort generally and for the tiger conservation especially. Way of or method for public awareness around WKNP executed through by some activity :

D.1 Counselling To Society.

Direct counselling activity to groups socialize in countryside around border of WKNP conducted continue to be in north region. This activity is joint with national park staff. Counselling directly this in the form of counselling activity which is in executing by visiting upon citizen house to house and meet with people (specially people indicated is illegal hunting) and talk about conservation effort.

D.2 Counselling To scout and student.

a. Conservation Counselling For scout

One of important moment in the August is commemoration scout day or more popular in Indonesia with commemoration day scout 14 August every year. Routine activity conducted by every commemorating scout day is encampment followed by group socialize especially the scout member. In year 2008 scout encampment in Labuhan ratu sub district.



STTCP cooperate with Way Kambas National Park, Scout Quarter Branch of East Lampung make even of encampment mentioned as a means to the forwarding of message of conservation to society. Some activity conducted that is:

- Race draw
- Twiddling conservation Film/Video
- Distribution conservation Leaflet.

Figure 9. Awareness activity.
Top: Staff of PKHS/STTCP still conduct awareness to society.
Down: Location of awareness



Tabel 4. Peoples which following awareness by PKHS/STTCP

No	Name	Adress	Note
1	Afandy	Rantau Jaya Ilir	People
2	Suprihadi	Rantau Jaya Baru	Head of village
3	Bambang	Rantau Jaya Baru	People
4	Rizal fahmi Mubarak	Rantau Jaya Baru	Head of moslem school
5	Warseno	Rantau Jaya Baru	People
6	Riyadi	Rantau Jaya Baru	People
7	Sisu	Rantau Jaya Baru	People
8	Sapari	Rantau Jaya Baru	People
9	Kadek Hendrayana	Bina Karya Buana	Head of village
10	Mamak	Bina Karya Buana	People
11	Kodiran	Bina Karya Buana	People
12	Ratno	Bina Karya Buana	People
13	Mardi	Beringin jaya	People
14	Suji	Bina Karya Buana	People
15	Sukiman	Bina Karya Buana	People
16	Marni	Bina Karya Buana	People
17	Tirat	Bina Karya Buana	People
18	Poniran	Gaya baru VI	People
19	S. Cakradimeja	Rajawali	Head of village
20	Kuwadi	Rajawali	People
21	Riyadi	Rajawali	People
22	Mesdi	Rajawali	People
23	Ngatino	Surabaya Baru	custom leader
24	Riwanto	Surabaya Baru	Custom leader
25	Amin	Surabaya Baru.	People
26	Sri untung wahyudi	Surabaya Baru.	People
27	Ibu Wirte	Cempaka Putih	People
28	Nyoman Santre	Cempaka Putih	People
29	Muhamad	Cempaka Putih	People
30	Galang	Cempaka Puith	people



Figure 10. situation of conservation counselling to scout

b. Athletics As Media of Conservation Awareness (Way Kambas 9 K)

A initiation of activity which is carried out by WKNP cooperate by STTCP and the Local government East Lampung is race run marathon 9 km (Way Kambas 9 K) at date of 24 August 2008. Especial target of this activity is as existing appreciation to improvement by athletic, development of ecotour of WKNP and dissemination of conservation information in WKNP generally and Sumatran tiger conservation specially.

This activity followed by public in region East Lampung especially group of young fellow and student. STTCP exploit moment of race mentioned as by means of dissemination of information of conservation of Sumatran tiger through distribution of conservation leaflet and sent information in Sumatran Tiger Conservation Information Center in Visitor Centre of Way Kambas.



Figure 11. situation athletic as conservation media

D.3 Camera Trap Training

As part of activity of uplifting of skill and displace technology there especially technique for camera trap operation, STTCP ever expose oneself to give training either through theory and also practice to all enthusiast. To date camera trap which operated by STTCP as a means of assist monitoring of tiger and other wild animal and have been proven effective and get appreciated from various party. One other hankering to follow to develop system camera trap is Foundation of Indonesian Rhino (RPU-YABI). For that side RPU (RPU-Way Kambas and RPU

Bukit Barisan Selatan) have delivered its staff to learn theory and technique of operation of camera trap in STTCP-WK. as for personil RPU got study of theory and practice of operation trap of the camera :

1. Bonari And Nur Basuki (RPU-WKNP)
2. Jalisi and Budiyono (RPU-BBSNP)

Figure 12. Staff of PKHS/STTCP as trainer to RPU staff about camera trap



E. Problems.

Problems execution activity during year 2008 covering several things of arising out from technical aspect and habitat aspect. Habitat aspect arising out like still not yet finished of case encroachment area; buffalo problem in park area and animal hunter continue menace. While constraint from technical aspect among other things still the lack of required camera trap unit, integrity program and the activity and also the coordination which not yet good.

F. Conclusion

Among various effort which have been conducted to preserve Sumatran tiger still always there is problems and constraint which emerge. Some problems and threat to the tiger in WKNP really still show growth dynamics sustained there still is prey supply which enough and the good habitat. At least the condition to become the reason of us to remain to the optimism.