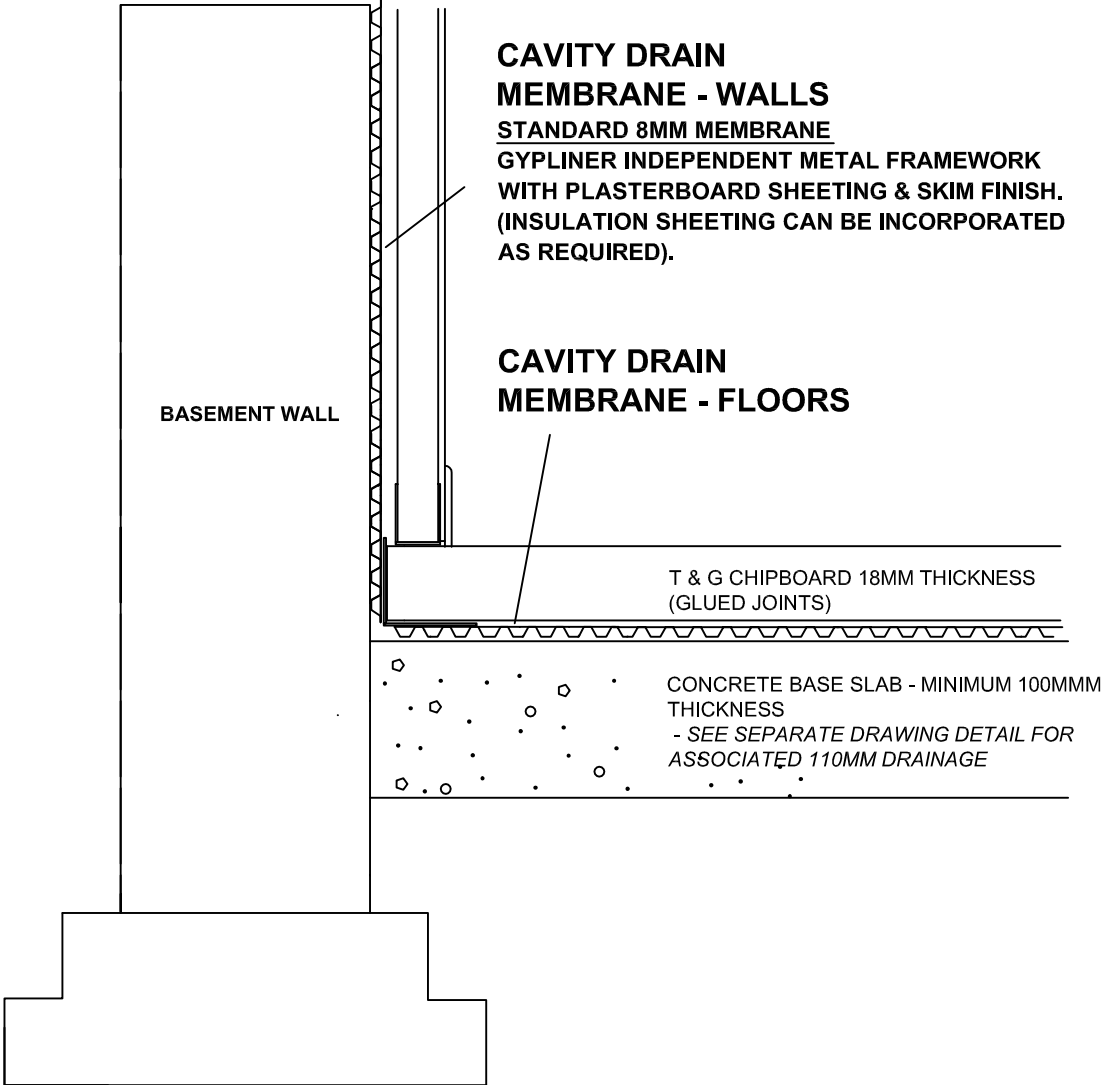


SECTION DETAIL - METAL FRAMEWORK DRYLINING & CHIPBOARD FLOOR



**CAVITY DRAIN
MEMBRANE - WALLS**
STANDARD 8MM MEMBRANE
GYPLINER INDEPENDENT METAL FRAMEWORK
WITH PLASTERBOARD SHEETING & SKIM FINISH.
(INSULATION SHEETING CAN BE INCORPORATED
AS REQUIRED).

**CAVITY DRAIN
MEMBRANE - FLOORS**

T & G CHIPBOARD 18MM THICKNESS
(GLUED JOINTS)

CONCRETE BASE SLAB - MINIMUM 100MMM
THICKNESS
- SEE SEPARATE DRAWING DETAIL FOR
ASSOCIATED 110MM DRAINAGE

FOR DRAINAGE DETAIL REFER
TO BLG DRAWING 005 -
CENTRAL DRAINAGE TO SUMP

