

# NEWSLETTER

This and other newsletters are available on our website:  
[www.grainger-platt.co.uk](http://www.grainger-platt.co.uk)

## Other News and Comments...

### POSTAGE PROBLEMS...

With the introduction of Royal Mail's Pricing in Proportion plan in August 2006, the stamp needed on your letters to us now depends on the size of your envelope.

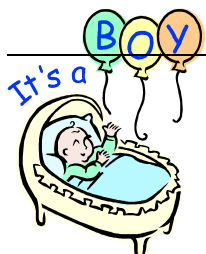
We have found that a number of clients are posting large envelopes to us with just an ordinary first class stamp on and as a result, we receive a card through our letterbox asking us to pay the extra postage required plus an administration fee before Royal Mail will let us have the item of post. This is an extra cost to us but there is also a delay in us receiving the item of mail and unfortunately, we don't know what it is or who it is from until we finally receive it.

To avoid any further delays, can everyone please be mindful of the correct postage rates for the size of the envelope being posted. Full details of Royal Mail's Pricing in Proportion rates are available at:  
[www.royalmail.com](http://www.royalmail.com)

### Pay Tax by Direct Debit?

Yes, you can, if you wish to, pay your Self Assessment tax online using HMRC's new Direct Debit Service. The Budget Payment Plan is an easier way to pay your SA tax and is available to those whose payments are up to date. The plan is voluntary and allows you to make regular payments towards a **future** liability. Any payments you make in advance will reduce what you

have to pay on 31 January and 31 July. You must still pay the full amount by the due date. Ring us for more details if interested.



**FOOTNOTE.... BABY NEWS....**  
 All of us at Grainger & Platt are proud to welcome the newest addition to our family. Helen gave birth to a beautiful baby boy on 25 March. Baby Theo.

## Focus on ...

### spreadsheets

QUESTION:

**Do you trust your spreadsheets?**

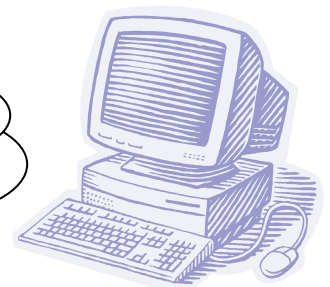
If the answer to this question is yes, then you may be interested to learn of an article which has just been published in an accountancy magazine!

Spreadsheets can be very useful in budgeting, investment appraisal and financial reporting, among other things. Their main attraction is the ability to recalculate an entire sheet automatically following a change to a single cell. However, have you ever:

- been confused by formulae
- thought "I wasn't expecting this" but trusted the answer without further checks
- come across errors such as #VALUE, #REF, #DIV/0
- opened a spreadsheet to find that it is linked to another spreadsheet that you don't have

If you have answered yes to any of these, then you may need to re-evaluate your confidence in your spreadsheets.

If you would like to know more about the article, we would be happy to produce a copy for you to read.



GRAINGER & PLATT  
 CHARTERED CERTIFIED ACCOUNTANTS  
 3 Fisher Street, Carlisle, CA3 8RR  
 Tel 01228 521286 Fax 01228 594929  
 Email : [info@grainger-platt.co.uk](mailto:info@grainger-platt.co.uk)